

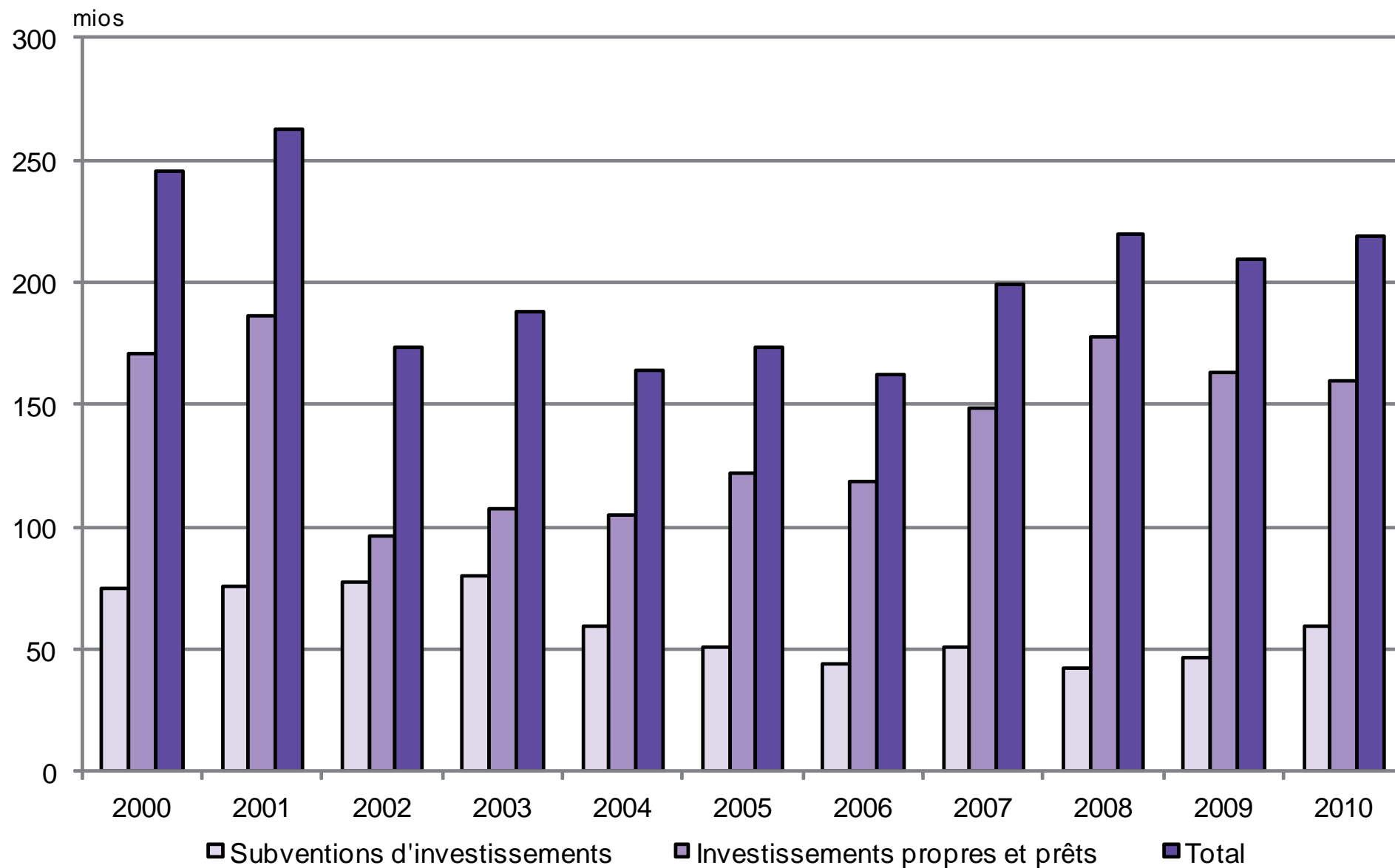
Investissements bruts

(en mios)	Investissements propres et prêts	Subventions d'investissements	TOTAL
1985	43.5	61.2	104.7
1990	94.7	99.1	193.8
1995	187.6	69.9	257.5
1996	222.1	67.1	289.2
1997	215.4	72.5	287.9
1998	229.5	70.3	299.8
1999	178.3	79.5	257.8
2000	171.1	74.5	245.6
2001	186.2	76.0	262.2
2002	96.5	77.1	173.6
2003	107.5	80.4	187.9
2004	105.0	59.4	164.4
2005	122.4	51.1	173.5
2006	119.0	43.7	162.7
2007	148.7	50.7	199.4
2008	177.8	41.9	219.7
2009	163.2	46.3	209.5
2010	159.6	59.6	219.2

Investissements nets

(en mios)	Investissements propres et prêts	Subventions d'investissements	TOTAL
1985	14.5	35.9	50.4
1990	43.6	62.5	106.1
1995	59.5	43.1	102.6
1996	61.9	39.6	101.5
1997	47.5	43.4	90.9
1998	89.4	42.7	132.1
1999	62.0	53.3	115.3
2000	63.9	42.5	106.4
2001	85.7	41.0	126.7
2002	55.1	36.9	92.0
2003	62.4	39.6	102.0
2004	60.3	33.7	94.0
2005	55.7	32.2	87.9
2006	45.5	28.1	73.6
2007	78.8	31.1	109.9
2008	106.8	29.5	136.3
2009	107.9	31.9	139.8
2010	101.7	42.7	144.4

Evolution des investissements bruts



Evolution des investissements nets

